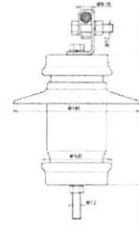


## DTR 4.8 10 3 (990 304)



Figure without obligation



Dimension drawing DTR 4.8 10 3

Type	DTR 4.8 10 3
Part No.	990 304
Nominal discharge current (8/20 μs) ( $I_n$ )	10 kA
High current impulse (4/10 μs)	100 kA
Long duration current impulse	1000 A / 2000 μs
Line discharge class	4 (10 kJ/kV <sub>U<sub>r</sub></sub> )
Rated voltage (d.c.) ( $U_r$ )	4.8 kV
Continuous operating voltage (d.c.) (MCOV) ( $U_c$ )	4.0 kV
Residual voltage at 10 kA (1/2 μs) ( $\hat{U}_{res}$ )	10.9 kV
Residual voltage at 5 kA (8/20 μs) ( $\hat{U}_{res}$ )	9.5 kV
Residual voltage at 10 kA (8/20 μs) ( $\hat{U}_{res}$ )	10.0 kV
Residual voltage at 20 kA (8/20 μs) ( $\hat{U}_{res}$ )	10.9 kV
Residual voltage at 250 A (30/70 μs) ( $\hat{U}_{res}$ )	7.9 kV
Residual voltage at 500 A (30/70 μs) ( $\hat{U}_{res}$ )	8.1 kV
Residual voltage at 1000 A (30/70 μs) ( $\hat{U}_{res}$ )	8.3 kV
Insulation of arrester housing / nominal power frequency withstand voltage (wet) ( $U_{PFWL}$ )	≥ 40 kV
Insulation of arrester housing / nominal switching withstand voltage (wet) ( $U_{SWL}$ )	≥ 50 kV
Height (H)	193 mm
Weight (M)	3 kg
Creepage distance (+/- 5%)	250 mm
Mechanical shock resistance acc. to IEC 68 Part 2-29	15 g
Vibration resistance acc. to IEC 68 Part 2-6	3 g (10-500 Hz)
Ambient temperature ( $T_A$ )	-40 °C ... +55 °C
Housing material	silicone
Colour	grey, RAL 7040
Fittings	Al cast alloy
Connections	stainless steel terminals and screws
Weight	3 kg
Customs tariff number (Comb. Nomenclature EU)	85354000
GTIN	4013364103115
PU	1 pc(s)

We reserve the right to introduce changes in performance, configuration and technology, dimensions, weights and materials in the course of technical progress. The figures are shown without obligation.